



**CSXi**  
Series

# Installation Instructions

## Spanish German Italian



**WARNING** - Disconnect from power source before installing or servicing.

**SPANISH** - Disconnect from power source before installing or servicing.

**GERMAN** - Disconnect from power source before installing or servicing.

**ITALIAN** - Disconnect from power source before installing or servicing.

Range  
Spanish  
German  
Italian

CSXi - [ ] - [ ] - [ ]

Control Supply (A1, A2, A3)

C1	110-240 VAC & 380-440 VAC
C2	24 VAC/VDC

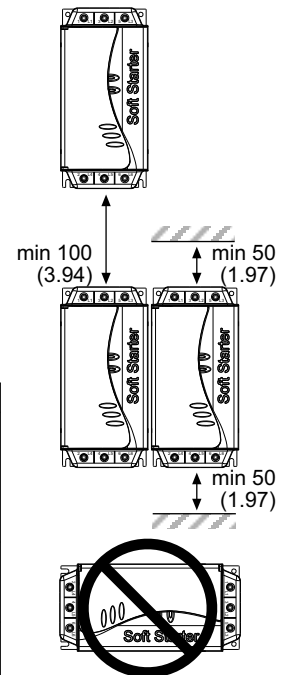
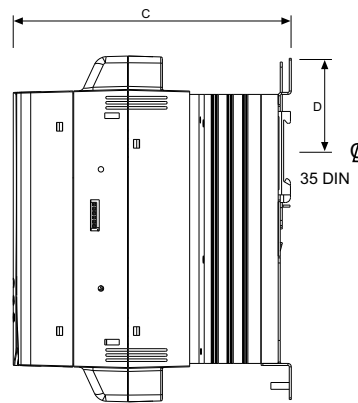
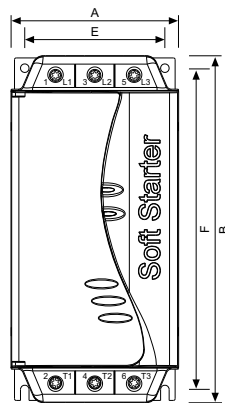
Mains Supply (L1, L2, L3)

V4	3Ø, 200-440 VAC, 45-66 Hz
V6	3Ø, 200-575 VAC, 45-66 Hz

Maximum Motor FLC

	AC53b 4-6:354	AC53b 4-20:340
007	18 A	16 A
015	34 A	31 A
018	42 A	37 A
022	48 A	46 A
030	60 A	48 A
	AC53b 4-6:594	AC53b 4-20:580
037	75 A	67 A
045	85 A	72 A
055	100 A	92 A
075	140 A	116 A
090	170 A	138 A
110	200 A	160 A

Dimensions  
Spanish  
German  
Italian



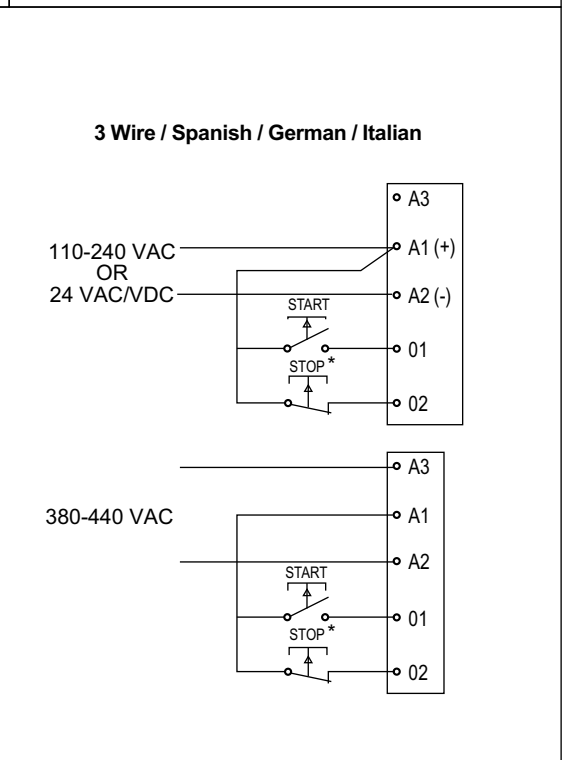
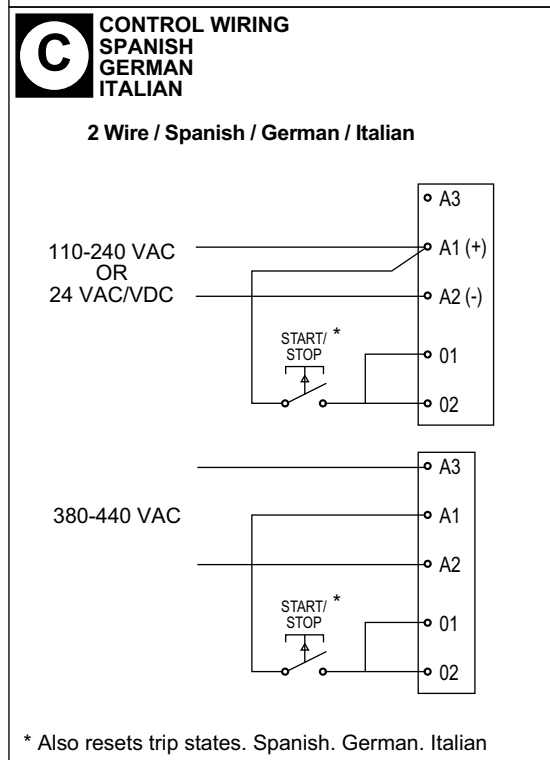
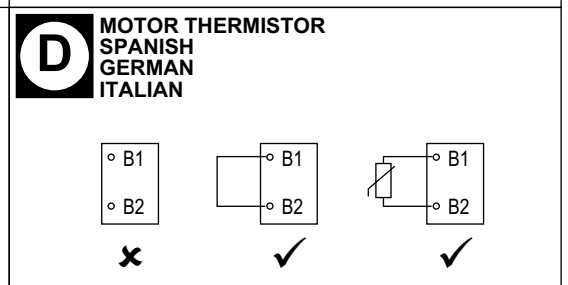
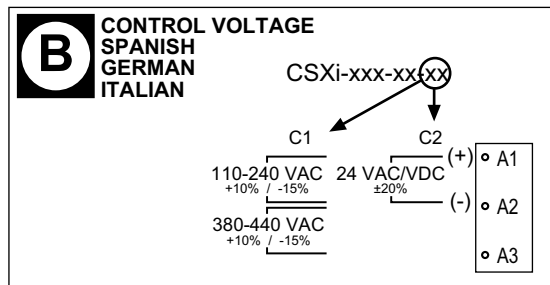
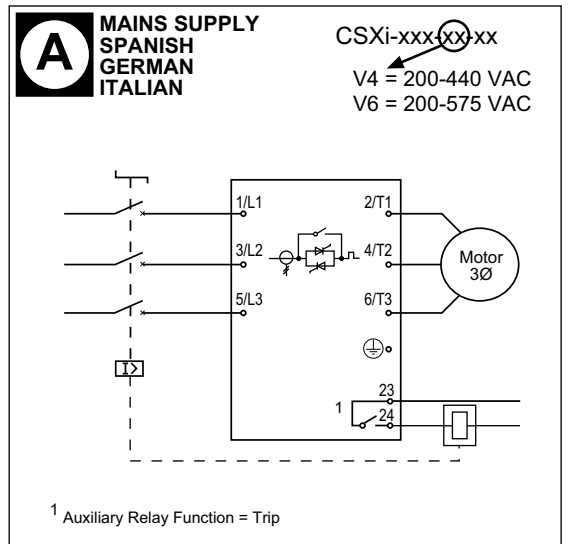
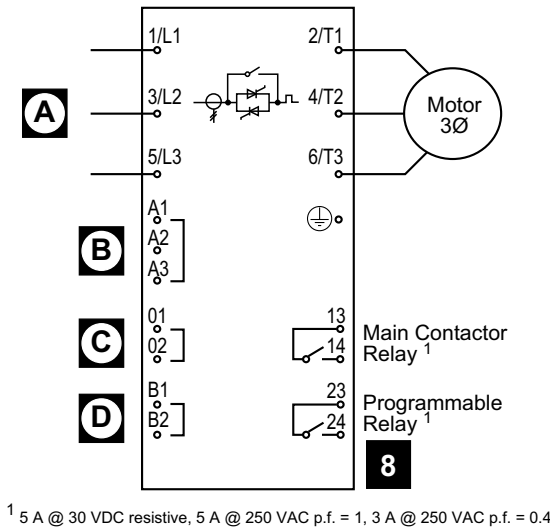
MODEL	A	B	C	D	E	F
007						
015						
018	98 (3.86)	203 (7.99)	163 (6.42)	55 (2.17)	82 (3.23)	188 (7.40)
022						
030						
037						
045	145 (5.71)	215 (8.46)	191 (7.52)	-	124 (4.88)	196 (7.72)
055						
075						
090	202 (7.95)	240 (9.45)	212 (8.35)	-	160 (6.30)	204 (8.03)
110						

mm (inch)

**Wiring**  
**Spanish**  
**German**  
**Italian**

75°C Wire Use copper conductors only	L1/1, L2/3, L3/5, T1/2, T2/4, T3/6 mm <sup>2</sup> (AWG)			A1, A2, A3, 01, 02, B4, B5, 13, 14, 23, 24 mm <sup>2</sup> (AWG)
	007 ~ 030	037 ~ 055	075 ~ 110	007 ~ 110
	10 - 35 (8 - 2)	 25 - 70 (4 - 2/0)	N.A.	 0.14 - 1.5 (26 - 16)
	10 - 35 (8 - 2)	 14 (0.55) mm (inch)	N.A.	 0.14 - 1.5 (26 - 16)
	Torx (T20) 3 - 5 Nm 2.2 - 3.7 ft-lb	Torx (T20) 4 - 6 Nm. 2.9 - 4.4 ft-lb	N.A.	N.A.
	7 mm 3 - 5 Nm 2.2 - 3.7 ft-lb	7 mm 4 - 6 Nm 2.9 - 4.4 ft-lb	N.A.	3.5 mm 0.5 Nm max 4.4 lb-in max

**Electrical Schematic**  
**Spanish**  
**German**  
**Italian**

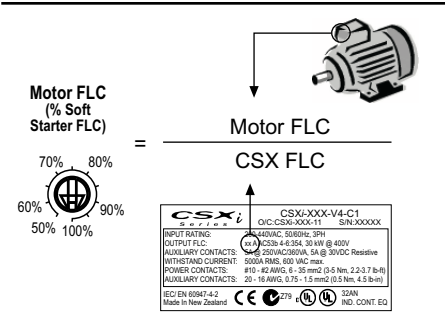


**LOCAL RESET**  
**SPANISH**  
**GERMAN**  
**ITALIAN**

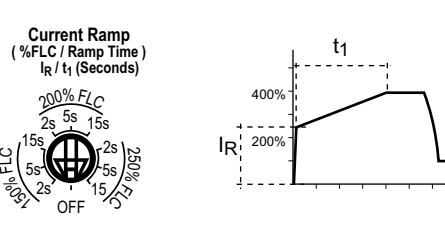
**5**

**Adjustments**  
**Spanish**  
**German**  
**Italian**

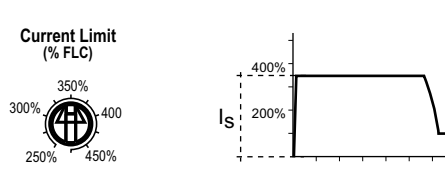
**1 MOTOR FLC**  
**SPANISH**  
**GERMAN**  
**ITALIAN**



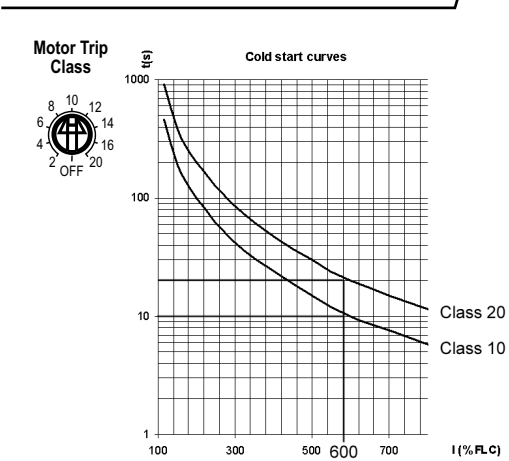
**2 CURRENT RAMP**  
**SPANISH**  
**GERMAN**  
**ITALIAN**



**3 CURRENT LIMIT**  
**SPANISH**  
**GERMAN**  
**ITALIAN**



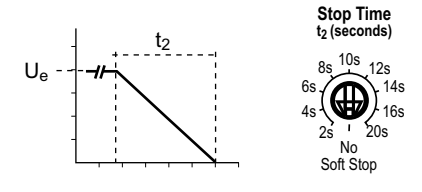
**4 MOTOR TRIP CLASS**  
**SPANISH**  
**GERMAN**  
**ITALIAN**



OFF = No overload protection  
 Spanish  
 German  
 Italian

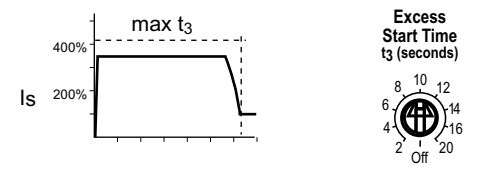
**SOFT STOP TIME**  
**SPANISH**  
**GERMAN**  
**ITALIAN**

**6**



**EXCESS START TIME**  
**SPANISH**  
**GERMAN**  
**ITALIAN**

**7**



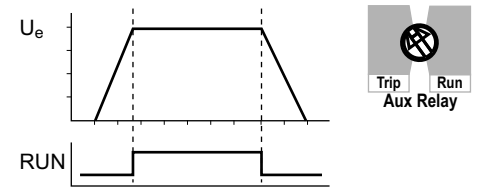
**PHASE SEQUENCE PROTECTION**  
**SPANISH**  
**GERMAN**  
**ITALIAN**

**8**

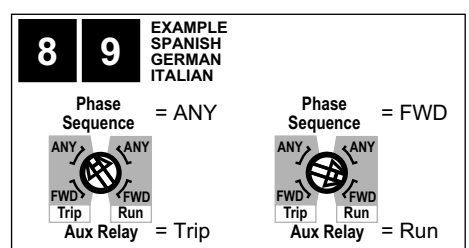


**AUXILIARY RELAY FUNCTION**  
**SPANISH**  
**GERMAN**  
**ITALIAN**

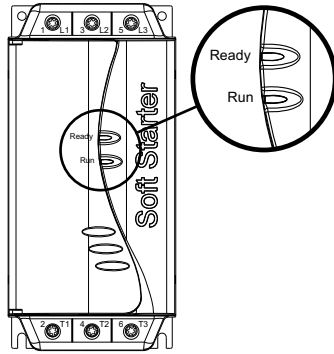
**9**



Trip = Fault, Spanish, German, Italian



**Indication**  
**Spanish**  
**German**  
**Italian**



	Ready	Run
Off Spanish German Italian	No control power Spanish German Italian	Motor not running Spanish German Italian
On Spanish German Italian	Ready Spanish German Italian	Motor running at full speed Spanish German Italian
Flash Spanish German Italian	Starter tripped Spanish German Italian	Motor starting or stopping Spanish German Italian

**Trouble Shooting**  
**Spanish**  
**German**  
**Italian**

Ready	Description / Spanish / German / Italian
x 1	Power Circuit: Check mains supply L1,L2 & L3, motor circuit T1,T2 & T3 and soft starter SCRs. Spanish German Italian
x 2	Excess Start Time: Check load, increase Current Limit or adjust Excess Start Time setting. Spanish German Italian
x 3	Motor Overload: Allow motor to cool, reset soft starter and restart. Soft starter cannot be reset until motor has cooled adequately. Spanish German Italian
x 4	Motor Thermistor: Check motor ventilation and thermistor connection B1 & B2. Allow motor to cool. Spanish German Italian
x 5	Phase Imbalance: Check line current L1, L2 & L3. Spanish German Italian
x 6	Supply Frequency: Check supply frequency is in range. Spanish German Italian
x 7	Phase Sequence: Check for correct phase rotation. Spanish German Italian
x 8	Communications Failure (between soft starter and optional accessory module): Check plug connection. Spanish German Italian



**CAUTION** - Disconnect from power source before installing or servicing.  
**SPANISH** - Disconnect from power source before installing or servicing.  
**GERMAN** - Disconnect from power source before installing or servicing.  
**ITALIAN** - Disconnect from power source before installing or servicing.



**CAUTION** - This product has been designed for Class A equipment. Use of this product in domestic environments may cause radio interference.  
**SPANISH** - This product has been designed for Class A equipment. Use of this product in domestic environments may cause radio interference.  
**GERMAN** - This product has been designed for Class A equipment. Use of this product in domestic environments may cause radio interference.  
**ITALIAN** - This product has been designed for Class A equipment. Use of this product in domestic environments may cause radio interference.



**CAUTION** - Do not connect power factor correction capacitors between the soft starter and the motor.  
**SPANISH** - Do not connect power factor correction capacitors between the soft starter and the motor.  
**GERMAN** - Do not connect power factor correction capacitors between the soft starter and the motor.  
**ITALIAN** - Do not connect power factor correction capacitors between the soft starter and the motor.

